



TTI  
SUCCESS  
INSIGHTS®

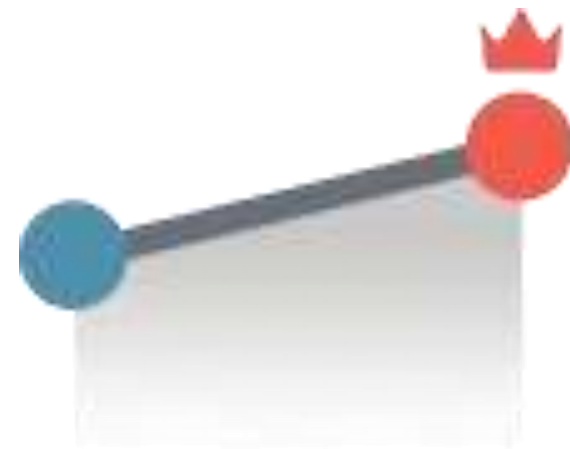


# The Pace of Change Has Changed

People have to adapt to create success in business



# Examining the Change



## The old world

Slow, linear path of change



## The new world

Exponential curve and trajectory of change (see phone and other technology in [this article](#))

# The Problem Stems from Rapid Speed of Information

Increased exposure to messages and  
people who try our emotions



**Papa John**



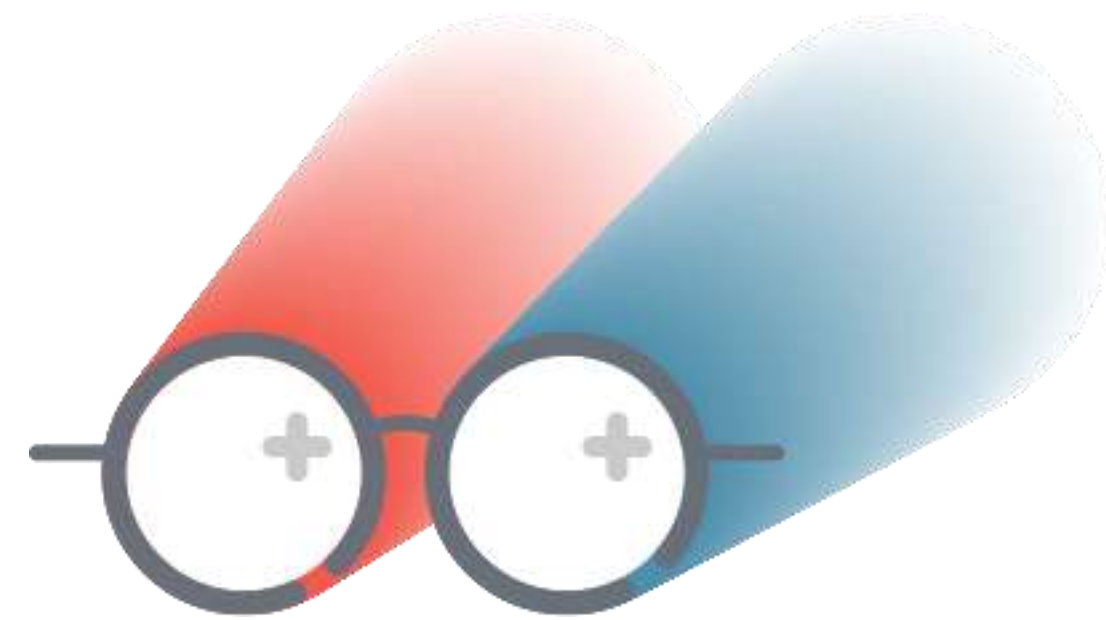
**Travis Kalanick**



**Elon Musk**



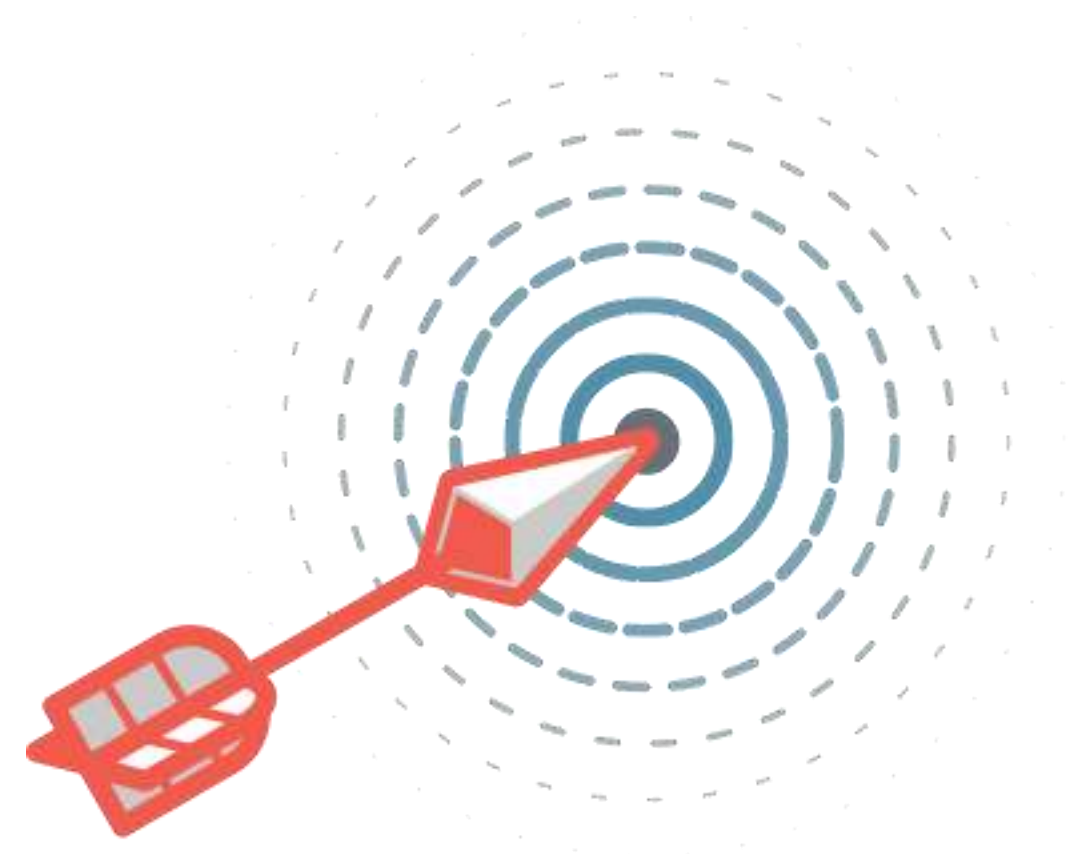
**Denise Young Smith**



## The Vision



Communication is easy and the changes and challenges are managed with care and people are able to thrive in the new world.



## The Golden Arrow



## Emotional Intelligence

And Emotional Quotient training to prepare you and your organization from the future

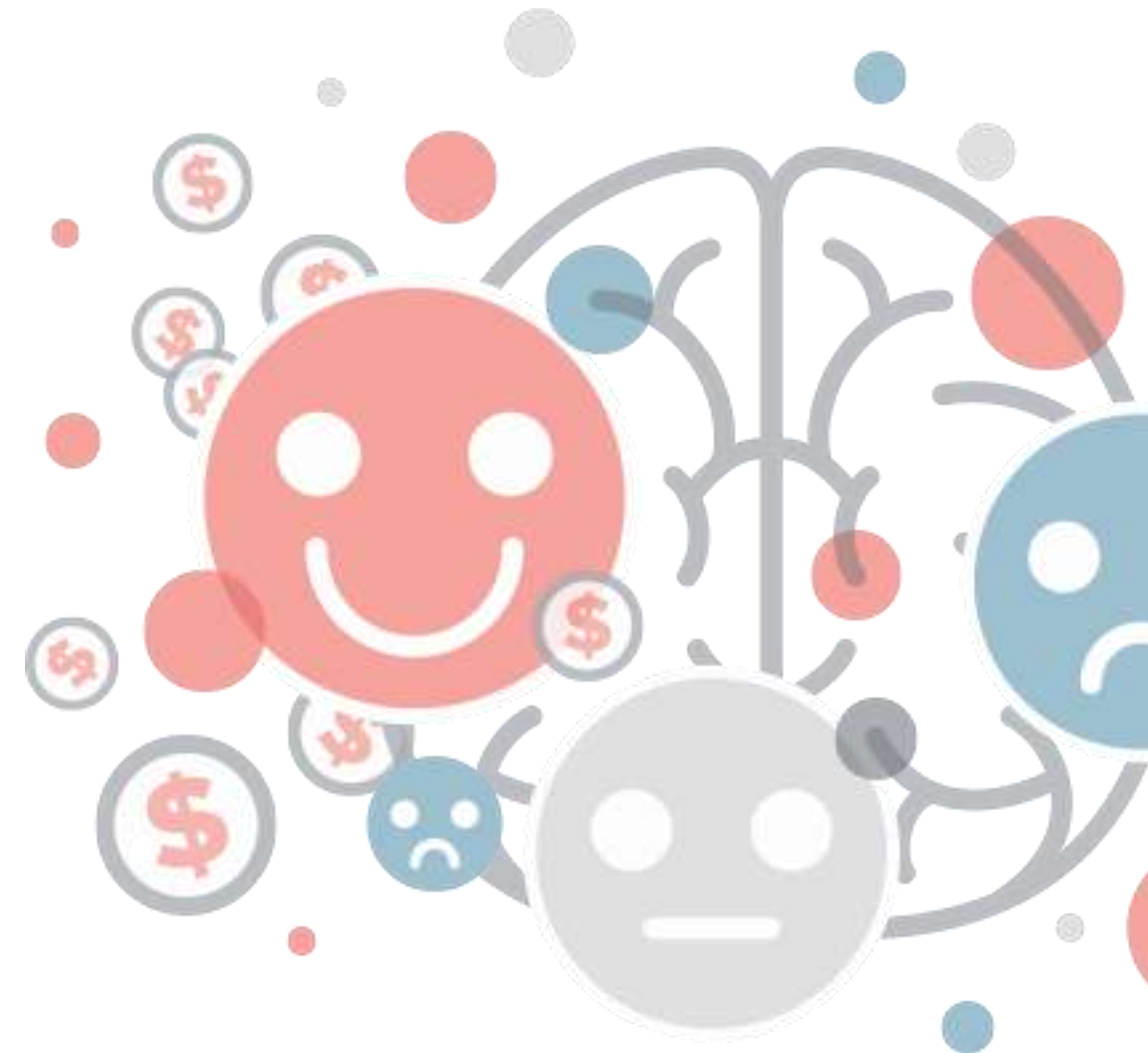


# Why Emotional Intelligence?

**90 percent of top performers are also high in emotional intelligence** [Source](#)

**The link between emotional intelligence and earnings is so direct** that every point increase in emotional intelligence adds \$1,300 to an annual salary [Source](#)

A study by McClelland in 1999 showed that after supervisors in a manufacturing plant received training in emotional competencies such as how to listen better, lost-time accidents decreased by 50% and grievances went down from 15 per year to three. The plant itself exceeded productivity goals by \$250,000. [Source](#)



## Social Proof



***“I'm filled with hope, optimism and inspiration. I look forward to receiving more of your strategies for strengthening my EQ. Thank you for helping me get to this better place.”***

Project Leader  
*Dove Chocolate*

## Social Proof



*“Everyone walked away with an inch-thick report detailing their individual characteristics and a literal lifetime of strategies and techniques for navigating those blind spots we all know exist. From the highest level executive to a team of new recruits, she can take your awareness to another level; she certainly did for me.”*

Senior Director  
Online Campus Services, Berkeley College



## Social Proof



*“I have been working with emotional intelligence for over 20 years. Using the EQ assessment was the first time the nebulous nature of the subject became easily explainable to clients, providing a significant foundation for clients to learn and improve over time.”*

Barry Soble

# Change will continue to test our emotional limits

Emotionally intelligent teams will help businesses achieve  
their goals now and into the future





For more information contact us at:

800.875.7599

[sales@precisionhiring.com](mailto:sales@precisionhiring.com)

[www.precisionhiring.com](http://www.precisionhiring.com)